

KEY TO TERRESTRIAL FAUNA TABLES (Tables C1-C6) (1/2)

T.S. (A.D.)

THREAT STATUS (according to ALI DEMIRSOY, 2002)

- E : Endangered
Ex : Extinct
I : In determinate
K : Insufficient known
nt : Widespread, abundant
O : Out of danger
R : Rare
V : Vulnerable

Status in Turkey (N.Turan, 1990)

(for birds only)

- Y : Resident species
YG : Summer visitor species
KG : Winter visitor species
G : Transit migratory birds
N : Rare bird species

REF. (REFERENCE)

- A: Observation
B: Communication with locals
C: Literature

H.R. = HUNTING RESTRICTIONS (According to Central Hunting Commission [MAK], 2004-2005)

- App1 (Appendix 1) : Wildlife species protected by Ministry of Environment and Forestry, hunting of which is prohibited
App2 (Appendix 2) : Game animals protected by MAK, hunting of which is prohibited for the specified year's hunting season (updated annually)
App3 (Appendix 3) : Game animals allowed to be hunted in predefined seasons by MAK

HABITAT FUNCTION

- B: Breeding
F: Feeding
N: Nesting
T: Traversing, wandering, passing through/over (birds)

OBSERVED IN HABITAT TYPE

1. Valley bed along river shorelines
2. Xerophyte shrubs
3. Rocky areas
4. Steppe
5. Forest areas
6. Cultivated areas
7. Bare rocks
8. Settlements
9. River
 - 9.1. Coruh River (mainstream)
 - 9.2. Oltu River
 - 9.3. Tortum River
 - 9.4. Barhal River

KEY TO TERRESTRIAL FAUNA TABLES (Tables C1-C6) (2/2)

IUCN (IUCN Red List of Threatened Species) (IUCN: The World Conservation Union)

(IUCN 2003. 2003 IUCN Red List of Threatened Species. <www.redlist.org>. Downloaded on 06 January 2004.)

IUCN Red List Categories and Criteria, 1994 (ver. 2.3)

EX: Extinct

EW: Extinct in the wild

CR: Critically endangered

EN: Endangered

VU: Vulnerable

LR: Lower risk

cd: conservation dependent

nt: near threatened

lc: least concern

DD: Data deficient

NE: Not evaluated

IUCN Red List Categories and Criteria, 2001 (ver. 3.1)*

EX: Extinct

EW: Extinct in the wild

CR: Critically endangered

EN: Endangered

VU: Vulnerable

NT: Near threatened

LC: Least concern

DD: Data deficient

NE: Not evaluated

* The IUCN Red List Categories and Criteria have undergone an extensive review in recent years and the revised Categories and Criteria (version 3.1) was published in 2001.

All new assessments and reassessments on the IUCN Red List use this system, however, reassessments are not yet complete. Both 1994 (ver 2.3) and 2001 (ver 3.1) categories are presented above for comparison. The categories in the following terrestrial fauna tables (and in the fish tables in Appendix D) are the IUCN categories of year 1994 (ver 2.3).

Finally, it should be noted that there is no national red data book for fauna in Turkey.

CITES (Convention on International Trade in Endangered Species of Wild Fauna and Flora)

App1 (Appendix 1): Species threatened with extinction. Trade in specimens of these species is permitted only in exceptional circumstances.

App2 (Appendix 2): Species not necessarily threatened with extinction, but their trade must be controlled to avoid utilization incompatible with their survival.

App3 (Appendix 3): Species protected in at least one country, and their trading is under control by CITES.

BERN (Bern Convention [Convention on the Conservation of European Wildlife and Natural Habitats])

Anx2 (Annex 2): Strictly Protected Fauna Species

Anx3 (Annex 3): Protected Fauna Species

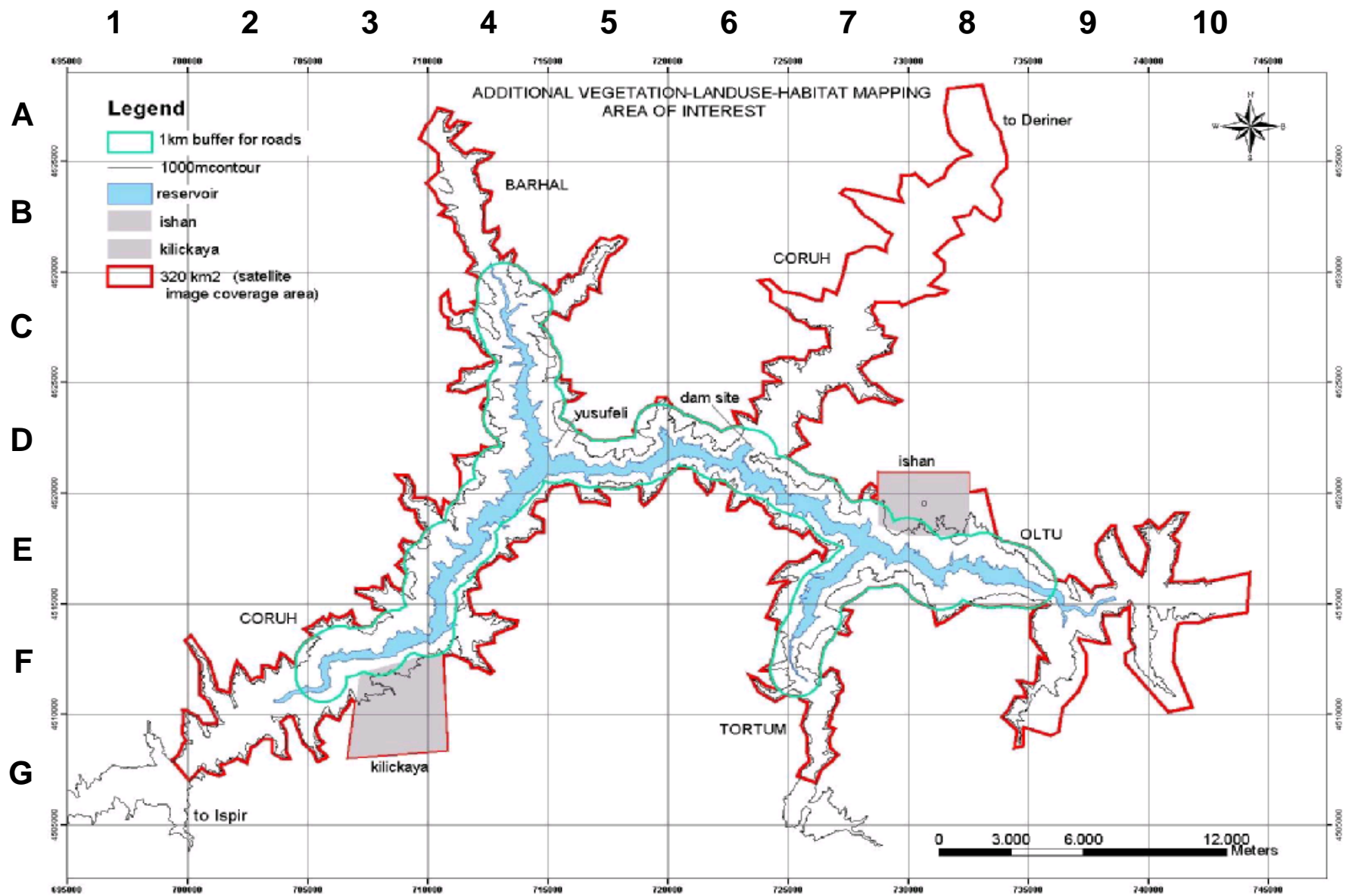


Figure C1. Bird Observation Grids

Table C1. Mammals Identified in the Study Area

MAMMALS	COMMON NAME		International Concern						National Concern			REF.	OBSERVED IN HABITAT TYPE	HABITAT FUNCTION			
			IUCN	BERN		CITES			T.S. (A.D.)	H.R.							
	TURKISH	ENGLISH		Anx2	Anx3	App1	App2	App3		App1	App2				App3		
1	INSECTIVORA																
	1	Erinaceidae															
	1	<i>Erinaceus concolor</i> Martin, 1838	Kirpi	Hedgehog	LR/lc	-	-	-	-	-	nt	x			A, C	1,2	B-F-N
	2	Soricidae															
	2	<i>Sorex minutus</i> Linnaeus, 1766	Cücefare	Pygmy shrew	LR/lc		x	-	-	-	nt	-	-	-	C	1,6	
2	CHIROPTERA																
	3	Rhinolophidae															
	3	<i>Rhinolophus hipposideros</i> (Bechstein, 1800)	Küçük Nalburunluyarasa	Lesser horseshoe bat	VU	x		-	-	-	V	x			C		
	4	<i>Rhinolophus euryale</i> Blasius, 1853	Akdeniz Nalburunluyarasası	Mediterranean Horseshoe	VU	x		-	-	-	V	x			C		
	4	Vespertilionidae															
	5	<i>Myotis myotis</i> (Borkhausen, 1797)	Farekulaklı Büyükyarasa	Greater Mouse-Eared Bat	LR/nt	x		-	-	-	V	x			C	5,8	
	6	<i>Pipistrellus pipistrellus</i> (Schreiber, 1774)	Cüce Yarasa	Pipistrelle bats	LR/lc		x	-	-	-	V	-	-	-	A, C	1,3,5,6,8	B-F-N
	7	<i>Miniopterus schreibersi</i> (Kuhl, 1819)	Uzunkanatlı Yarasa	Schreiber's Bat	LR/nt	x		-	-	-	V	x			C	1,3,5,6,8	
3	LAGOMORPHA																
	5	Leporidae															
	8	<i>Lepus capensis</i> Linnaeus, 1758	Tavşan	Brown Hare	LR/lc		x	-	-	-	nt			x	A, C	2,4,5,6	B-F-N
4	RODENTIA																
	6	Sciuridae															
	9	<i>Sciurus anomalus</i> Chreber, 1758	Kafkas Sincabı	Persian Squirrel	LR/nt	x		-	-	-	R/l	x			A, C	1,5,8	B-F-N
	7	Gliridae															

Table C1. Mammals Identified in the Study Area

MAMMALS			COMMON NAME		International Concern					National Concern			REF.	OBSERVED IN HABITAT TYPE	HABITAT FUNCTION		
					IUCN	BERN		CITES			T.S. (A.D.)	H.R.					
			TURKISH	ENGLISH		Anx2	Anx3	App1	App2	App3		App1				App2	App3
	10	<i>Dryomys nitedula</i> (Pallas, 1779)	Ağaç Yediuuyuru	Forest dormouse	LR/nt		x	-	-	-	R	x			A, C	1,6	B-F-N
	8	Muridae															
	11	<i>Rattus rattus</i> (Linnaeus, 1758)	Siyahsıçan	Black Rat	LR/lc	-	-	-	-	-	nt	-	-	-	A, C	1,8	B-F-N
	12	<i>Apodemus sylvaticus</i> (Linnaeus, 1758)	Orman Faresi	Wood Mouse	LR/lc	-	-	-	-	-	nt	-	-	-	A, C	1,5,6,8	B-F-N
	13	<i>Apodemus mystacinus</i> (Danford & Alston, 1877)	Kayalık Faresi	Broad-toothed Mouse	LR/lc	-	-	-	-	-	nt	-	-	-	A, C	1,3,5,6,8	B-F-N
	5	CARNIVORA															
	9	Mustelidae															
	14	<i>Mustela nivalis</i> Linnaeus, 1766	Gelincik	Least weasel	LR/lc		x	-	-	-	nt		x		B, C	1,3,5,6	
	15	<i>Mustela erminea</i> Linnaeus, 1758	Büyük gelincik	Stoats	LR/lc		x	-	-	-	nt		x		C	1,2,3,5,6	
	16	<i>Martes martes</i> (Linnaeus, 1758)	Ağaç Sansarı	Pine Marten	LR/lc		x	-	-	-	nt			x	A, C	5	B-F-N
	17	<i>Martes foina</i> (Erxleben 1777)	Kaya Sansarı	Beech Marten	LR/lc		x	-	-	-	nt			x	A, C	3,8	B-F-N
	18	<i>Meles meles</i> (Linnaeus, 1758)	Porsuk	Eurasian badger	LR/lc		x	-	-	-	R		x		B	1,2,3,4,5,6	
	10	Canidae															
	19	<i>Vulpes vulpes</i> Linnaeus, 1758	Tilki	Fox	LR/lc	-	-	-	-	-	nt			x	A,B,C	1,2,3,4,5,6	B-F-N
	20	<i>Canis lupus</i> Linnaeus, 1758	Kurt	Wolf	LR/lc	x			x		R(V)	x			A,B,C	3,5	B-F-N
	21	<i>Canis aureus</i> Linné, 1758	Çakal	Goldschakal	LR/lc	-	-	-	-	-	nt			x	A,B,C	3,5	B-F-N
	11	Ursidae															

Table C1. Mammals Identified in the Study Area

MAMMALS			COMMON NAME		International Concern					National Concern			REF.	OBSERVED IN HABITAT TYPE	HABITAT FUNCTION		
					IUCN	BERN		CITES			T.S. (A.D.)	H.R.					
			TURKISH	ENGLISH		Anx2	Anx3	App1	App2	App3		App1				App2	App3
	22	<i>Ursus arctos</i> Linnaeus, 1758	Bozayı	Grizzly Bears	LR/lc	x			x		V	x			B, C	5	
6	ARTIODACTYLA																
	12	Bovidae															
	23	<i>Capra aegagrus</i> Erxleben, 1777	Yaban Keçisi	Wild Goats	VU	x		-	-	-	nt/E	x	x		A,B,C	2,3,5	F
	24	<i>Rupicapra rupicapra</i> (Linnaeus, 1758)	Ç. B. Dağ Keçisi	Alpine Chamois	LR/lc		x		-	-	nt/E	x	x		B, C	2,3,5	

Table C2. Birds Identified in the Study Area

BIRDS	COMMON NAME		International Concern						National Concern			Status in Turkey					Observed in Habitat Type	Habitat Function	Observed at observ. grid (Figure C1)		
			IUCN	BERN		CITES		H.R.			N.Turan										
	TURKISH	ENGLISH			Anx2	Anx3	App1	App2	App3	App1	App2	App3	Y	YG	KG	G				N	
1	CICONIIFORMES																				
	1	ARDEIDAE																			
		1 <i>Ardea cinerea</i>	Gri balikcil	Grey heron	–	x	–	–	–		x		x						1	F,T	C4,F7
	2	CICONIIDAE																			
		2 <i>Ciconia ciconia</i>	Akleylek	White stork	–	x	–	–	–	x			x						3,6,8	F,T	E6,E8
2	FALCONIFORMES																				
	3	ACCIPITRIDAE																			
		3 <i>Milvus milvus</i>	Kizil caylak	Red kite	–	x			x		x		x						3,5,7	F,T	D6,E8
		4 <i>Circaetus gallicus</i>	Yilan kartali	Short-toed eagle	–	x			x		x		x						3,5,7	F,T	D6,E8
		5 <i>Accipiter nisus</i>	Atmaca	Sparrow hawk	–	x			x		x		x						2,4,5	B,F,T	D6,D8,E8
		6 <i>Buteo rufinus</i>	Kizil sahin	Long-legged buzzard	–	x			x		x		x						2,3,6	B,F,T	D6,D8,E8
		7 <i>Buteo buteo</i>	Sahin	Buzzard	–	x			x		x		x						1	B,F,T	D6,D8,E8
		8 <i>Gypaetus barbatus</i>	Sakalli akbaba	Lammergeier	–	x			x		x		x						3,5,7	F,T	D6,E8
		9 <i>Neophron percnopterus</i>	Beyaz akbaba	Egyptian vulture	–	x			x		x		x	x					3,5,7	B,F,T	D6,E8
		10 <i>Gyps fulvus</i>	Kizil akbaba	Griffon vulture	–	x			x		x		x						3,5,7	B,F,T	D6,D8,E8
		11 <i>Aegypius monachus</i>	Kara akbaba	Black vulture	LR/nt	x			x		x		x						3,5,7	B,F,T	D6,E8
		12 <i>Aquila chrysaetos</i>	Kaya kartali	Golden eagle	–	x			x		x		x						3,5,7	B,F,T	D6,D8,E8
		13 <i>Pernis apivorus</i>	Aricil	Honey buzzard	–	x			x		x		x						3,5,7	F,T	D6,D8,E8
	4	FALCONIDAE																			
		14 <i>Falco tinnunculus</i>	Kerkenez	Kestrel	–	x			x		x		x						2,4,5,6,8	B,F,T	C4,D6,E4,E6
		15 <i>Falco subbuteo</i>	Delice dogan	Hobby	–	x			x		x		x						2,4,5	B,F,T	C4,D6,E4

Table C2. Birds Identified in the Study Area

BIRDS			COMMON NAME		International Concern					National Concern			Status in Turkey					Observed in Habitat Type	Habitat Function	Observed at observ. grid (Figure C1)	
					IUCN	BERN		CITES			H.R.			N.Turan							
			TURKISH	ENGLISH		Anx2	Anx3	App1	App2	App3	App1	App2	App3	Y	YG	KG	G				N
10	APODIDAE																				
	26	<i>Apus apus</i>	Ebabil, Karasagan	Swift	-	x	-	-	-	x				x					1,3,6,8	B,F,T	C4,D4,F7
	27	<i>Apus melba</i>	Akkarinli ebabil	Alpine swift	-	x	-	-	-	x				x					3	F,T	F7
9	CORACIIFORMES																				
	11	MEROPIDAE																			
	28	<i>Merops apiaster</i>	Arikusu	Beeather	-	x	-	-	-	x				x					4,5,8	F,T	D5,E3,E8
	12	CORACIIDAE																			
	29	<i>Coracias garrulus</i>	Mavi karga	Roller	-	x	-	-	-	x				x					1,6	F,T	E6
	13	UPUPIDAE																			
	30	<i>Upupa epops</i>	Ibibik	Hoope	-	x	-	-	-	x				x					1,6	F,T	D5,D6
10	PICIFORMES																				
	14	PICIDAE																			
	31	<i>Dendrocopus syriacus</i>	Alaca agackakan	Syrian woodpecker	-	x	-	-	-	x				x					5	B,F,T	C4,D6,E6
	32	<i>Dendrocopus minor</i>	Kucuk agackakan	Lesser-spotted woodpecker	-	x	-	-	-	x				x					5	B,F,T	C4,D4,D5,E6
11	PASSERIFORMES																				
	15	ALAUDIDAE																			
	33	<i>Galerida cristata</i>	Tepeli toygar	Crested lark	-		x	-	-		x			x					1,2,4,5,6,8	B,F,T	C4,D5,D6,F7
	34	<i>Eremophila alpestris</i>	Kulakli tarlakuşu	Shore lark	-	x		-	-	x				x					3,5	B,F,T	C4,D5,E8,F7
	16	HIRUNDINIDAE																			
	35	<i>Hirundo rustica</i>	Is kirlangici	Swallow	-	x		-	-	x				x					1,2,4,6,8	B,F,T	C4,D6,E7
	36	<i>Ptyonoprogne rupestris</i>	Kaya kirlangici	Crag martin	-	x		-	-	x				x					3,7	B,F,T	C4,D6,E7

Table C2. Birds Identified in the Study Area

BIRDS			COMMON NAME		International Concern					National Concern			Status in Turkey					Observed in Habitat Type	Habitat Function	Observed at observ. grid (Figure C1)	
					IUCN	BERN		CITES			H.R.			N.Turan							
			TURKISH	ENGLISH		Anx2	Anx3	App1	App2	App3	App1	App2	App3	Y	YG	KG	G				N
	37	<i>Delichon urbica</i>	Pencere kirlangici	House martin	-	x		-	-	-	x				x				8	B,F,T	C4,D6,E7
	17	MOTACILLIDAE																			
	38	<i>Anthus cervinus</i>	Algerdan incirkusu	Red-throated pipit	-	x		-	-	-	x						x		4	B,F,T	E4
	39	<i>Motacilla flava</i> spp	Sari kuyruksallayan	Yellow wagtail	-	x		-	-	-	x				x				1,4,6,8	B,F,T	E4,E7
	40	<i>Motacilla alba</i>	Akkuyruksallayan	Pied wagtail	-	x		-	-	-	x				x				1,4,6,8	B,F,T	E4,E7
	18	CINCLIDAE																			
	41	<i>Cinclus cinclus</i>	Su karatavugu	Dipper	-	x		-	-	-	x				x				1	B,F,T	D4,D6,E6,E7
	19	TROGLODYTIDAE																			
	42	<i>Troglodytes troglodytes</i>	Cit kusu	Wren	-	x		-	-	-	x				x				1	B,F,T	D4,D6,E6,E7
	20	TURDIDAE																			
	43	<i>Erithacus rubecula</i>	Kizilgerdan	Robin	-	x		-	-	-	x				x				1	F,T	D6
	44	<i>Luscinia megarynchos</i>	Bulbul	Nightingale	-	x		-	-	-	x				x				1	B,F,T	C4,D6,E8
	45	<i>Phoenicurus ochruros</i>	Ev kizilkuyrugu	Black redstart	-	x		-	-	-	x				x				1,4	F,T	C4
	46	<i>Phoenicurus phoenicurus</i>	Dag kizilkuyrugu	Redstart	-	x		-	-	-	x				x	x			2,3,4	F,T	E8
	47	<i>Saxicola torquata</i>	Taskusu	Stonechat	-	x		-	-	-	x				x	x			1	F,T	E8
	48	<i>Oenanthe oenanthe</i>	Kuyrukkakan	Wheather	-	x		-	-	-	x				x				2,3,4,5	F,T	D6,E8
	49	<i>Oenanthe hispanica</i>	Karakulak kuyrukkakan	Black-eared wheather	-	x		-	-	-	x				x				2,3,4,5	B,F,T	C4,D6,E8
	50	<i>Oenanthe isabellina</i>	Toprak renkli kuyrukkakan	Isabelline wheather	-	x		-	-	-	x				x				2,3,4,5,6,8	B,F,T	C4,D6,E8

Table C2. Birds Identified in the Study Area

BIRDS			COMMON NAME		International Concern						National Concern			Status in Turkey					Observed in Habitat Type	Habitat Function	Observed at observ. grid (Figure C1)	
					IUCN	BERN		CITES			H.R.			N.Turan								
			TURKISH	ENGLISH		Anx2	Anx3	App1	App2	App3	App1	App2	App3	Y	YG	KG	G	N				
	51	<i>Monticola solitarius</i>	Mavi kayaardici	Blue rock thrush	-	x		-	-	-	x			x						1	F,T	E8
	52	<i>Turdus merula</i>	Karatavuk	Blackbird	-		x	-	-	-				x						1,4,5,6,8	B,F,T	C4,D6,E8
21	SYLVIIDAE																					
	53	<i>Cettia cetti</i>	Setti bulbulu	Cetti's warbler	-	x		-	-	-	x			x						1,6	B,F,T	C4,C5,E4,E6
22	PARIDAE																					
	54	<i>Parus ater</i>	Cam bastankarasi	Coal tit	-	x		-	-	-	x			x						1,5	B,F,T	D6,E6
	55	<i>Parus caeruleus</i>	Mavi bastankarasi	Blue tit	-	x		-	-	-	x			x						1	B,F,T	D6,E6
	56	<i>Parus major</i>	Buyuk bastankarasi	Great tit	-	x		-	-	-	x			x						1,5,8	B,F,T	D4,D5,E6
23	SITTIDAE																					
	57	<i>Sitta europaea</i>	Sivaci	Nuthatch	-	x		-	-	-	x			x						3,7	B,F,T	D6,E8,F7
	58	<i>Sitta neumayer</i>	Kaya sivacisi	Rock nuthatch	-	x		-	-	-	x			x						3,7	B,F,T	D4,D6,E8
24	ORIOLIDAE																					
	59	<i>Oriolus oriolus</i>	Sariasma	Golden oriole	-	x		-	-	-	x				x					1	B,F,T	C5,D5,D6,E6,F7
25	LANIIDAE																					
	60	<i>Lanius collurio</i>	Cekirgekusu	Red-backed shrike	-	x		-	-	-	x				x					2,4,5	F,T	C4,D6,E7
	61	<i>Lanius minor</i>	Karaalinli cekirgekusu	Lesser gray shrike	-	x		-	-	-	x				x					2,4	F,T	C4,D6,E7,E8
26	CORVIDAE																					
	62	<i>Garrulus glandarius</i>	Kestane kargasi	Jay	-	-	-	-	-	-				x	x					1,5,6,8	B,F,T	C4,D6,E6,E8

Table C2. Birds Identified in the Study Area

BIRDS			COMMON NAME		International Concern						National Concern			Status in Turkey					Observed in Habitat Type	Habitat Function	Observed at observ. grid (Figure C1)	
					IUCN	BERN		CITES			H.R.			N.Turan								
			TURKISH	ENGLISH		Anx2	Anx3	App1	App2	App3	App1	App2	App3	Y	YG	KG	G	N				
	63	<i>Pica pica</i>	Saksagan	Magpie	-	-	-	-	-	-			x	x						1,4,5,6,8	B,F,T	C4,D4,D5,D6,E4,E8
	64	<i>Pyrrhocorax pyrrhocorax</i>	Kizilgagali dag kargasi	Chough	-	x		-	-	-	x			x						3,7	B,F,T	C4,D6,E6,E8
	65	<i>Corvus monedula</i>	Cuce karga	Jackdaw	-	-	-	-	-	-			x	x						1,4,5,6,8	B,F,T	C4,D4,D5,D6,E4,E8
	66	<i>Corvus frugilegus</i>	Ekinkargasi	Field raven	-	-	-	-	-	-			x	x						1,4,5,6,8	B,F,T	C4,D4,D5,D6,E4,E8
	67	<i>Corvus corene cornix</i>	Leskargasi	Hooded	-	-	-	-	-	-			x	x						1,4,5,6,8	B,F,T	C4,D4,E6
	68	<i>Corvus corax</i>	Karakarga	Raven	-		x	-	-	-		x		x						1,3,5	B,F,T	C4,D5,E4,E6,E8
27	STURNIDAE																					
	69	<i>Sturnus vulgaris</i>	Sigircik	Starling	-	-	-	-	-	-		x		x						1,4,5,6,8	B,F,T	C4,D4,E7,F7
28	PASSERIDAE																					
	70	<i>Passer domesticus</i>	Ev sercesi	House sparrow	-	-	-	-	-	-			x	x						1,4,5,6,8	B,F,T	All over the project area
	71	<i>Passer montanus</i>	Dag sercesi	Tree sparrow	-		x	-	-	-		x		x						1,4,5,6,8	B,F,T	All over the project area
	72	<i>Passer hispaniolensis</i>	Bataklik sercesi	Spanish sparrow	-		x	-	-	-		x		x						1,8	B,F,T	D6
29	FRINGILLIDAE																					
	73	<i>Fringilla coelebs</i>	Ispinoz	Caffinch	-		x	-	-	-		x		x						1	F,T	D5
	74	<i>Carduelis chloris</i>	Florya	Greenfinch	-	x		-	-	-	x			x						1,4,5,6,8	B,F,T	C4,D5,E7
	75	<i>Carduelis carduelis</i>	Saka	Goldfinch	-	x		-	-	-	x			x						1,4,5,6,8	B,F,T	C4,D5,E7

Table C2. Birds Identified in the Study Area

BIRDS			COMMON NAME		International Concern					National Concern			Status in Turkey					Observed in Habitat Type	Habitat Function	Observed at observ. grid (Figure C1)		
					IUCN	BERN		CITES			H.R.			N.Turan								
			TURKISH	ENGLISH		Anx2	Anx3	App1	App2	App3	App1	App2	App3	Y	YG	KG	G				N	
	76	<i>Carduelis cannabina</i>	Ketenkusu	Linnet	-	x		-	-	-	x			x						1,4,5,6,8	B,F,T	C4,D5,E8
	30	EMBERIZIDAE																				
	77	<i>Emberiza caesia</i>	Kizil kirazkusu	Cretzschmar bunting	-	x		-	-	-	x			x						3,5,7	B,F,T	B4,C4,D6,F7
	78	<i>Emberiza melanocephala</i>	Karabas kirazkusu	Black-headed bunting	-	x		-	-	-	x			x						1,4,5,6,8	B,F,T	C4,D5,D6,E8,
	79	<i>Miliaria (Emberiza) calandra</i>	Tarla kirazkusu	Corn bunting	-		x	-	-	-		x		x						1,4,5,6,8	B,F,T	C4,D5,D6,E8,

Table C3. Reptiles Identified in the Study Area

REPTILES	COMMON NAME		International Concern					National Concern			REF.	OBSERVED IN HABITAT TYPE	HABITAT FUNCTION			
	TURKISH	ENGLISH	IUCN	BERN		CITES			T.S. (A.D.)	H.R.						
				Anx2	Anx3	App1	App2	App3		App1				App2	App3	
1																
1	SQUAMATA															
	1	Lacertidae														
	1	<i>Lacerta rudis</i> Bedriaga, 1886	Trabzon kertenkelesi	Keel-Tailed Rock Lizard	–	x	–	–	–	nt	x	–	–	A	2,3	B,F,N
	2	<i>Lacerta trilineata</i> Bedriaga, 1886	İri Yeşil Kertenkele	Balkan Green Lizard	–	x	–	–	–	nt	x	–	–	A	1,8	B,F,N
	3	<i>Lacerta raddei</i> Boettger, 1892	Radde Kertenkelesi	Radde Lizard	–	x	–	–	–	–	x	–	–	A	2	B,F,N
	4	<i>Ophisops elegans</i> Menetries, 1832	Tarla Kertenkelesi	Snake-eyed Lizard	–	x	–	–	–	nt	x	–	–	A	4,6	B,F,N
	2	Colubridae														
	5	<i>Eirenis modestus</i> Martin, 1838	Uysal Yılan	Dwarf Snake	–	x	–	–	–	nt	x	–	–	A	6,8	B,F,N
	6	<i>Natrix tessellata</i> (Laurenti, 1768)	Su yılanı	Dice Snake	–	x	–	–	–	nt	x	–	–	A	1	B,F,N
	7	<i>Coluber schmidtii</i> Nikolsky 1909	Kırmızı yılan	Schmidtii Whip Snake	–	x	–	–	–	nt	x	–	–	A	2,3	B,F,N
	3	Viperidae														
	8	<i>Vipera lebetina</i> (Linnaeus, 1758)	Koca Engerek	Blunt-nosed Viper	–	x	–	–	–	nt	x	–	–	A	1,2,3	B,F,N

Table C4. Amphibians Identified in the Study Area

AMPHIBIANS		COMMON NAME		International Concern					National Concern			REF.	OBSERVED IN HABITAT TYPE	HABITAT FUNCTION			
		TURKISH	ENGLISH	IUCN	BERN		CITES			T.S. (A.D.)	H.R.						
					Anx2	Anx3	App1	App2	App3		App1				App2-a	App3	
1	ORDER																
	ANURA																
	1	Ranidae															
	1	<i>Rana ridibunda</i> Pallas, 1771	Ova Kurbağası	Marsh frog	-		x	-	-	-	nt	-	-	-	A	1	B,F,N
	2	Bufo															
	2	<i>Bufo viridis</i> Laurenti, 1768	Gece Kurbağası	Green Toad	-	x		-	-	-	nt	-	-	-	A	1	B,F,N

Table C5. Invertebrates Identified in the Study Area

INVERTEBRATES	COMMON NAME		IUCN	BERN		ENDEMISM
	TURKISH	ENGLISH		Anx2	Anx3	
1 ODONATA	Subakireleri					
1 Cordulegasteridae						
1 <i>Cordulegaster insignis</i> Schneider, 1845			-	-	-	-
2 Coenagrionidae						
2 <i>Ischnura elegans</i> (Vander Linden, 1820)		Blue-tailed Damselfly	-	-	-	-
3 Libellulidae						
3 <i>Orthetrum brunneum</i> (Fonscolombe, 1837)			-	-	-	-
4 <i>Sympetrum flaveolum</i> (Linnaeus, 1758)			-	-	-	-
5 <i>Libellula depressa</i> Linnaeus, 1758			-	-	-	-
4 Aeshnidae						
6 <i>Anax imperator</i> Leach, 1815			-	-	-	-
2 NEUROPTERA	Sinirkanatlilar					
5 Chrysopidae						
7 <i>Chrysopa formosa</i> Brauer, 1850		Green lacewing	-	-	-	-
8 <i>Chrysoperla carnea</i> (Stephens, 1836)			-	-	-	-
9 <i>Dichochrysa prasina</i> (Burmeister, 1839)			-	-	-	-
10 <i>Italochrysa italica</i> (Rossi, 1790)			-	-	-	-
6 Myrmeleontidae						
11 <i>Macronemurus bilineatus</i> Brauer, 1868			-	-	-	-
7 Ascalaphidae						
12 <i>Bubopsis hamatus</i> (Klug, 1834)			-	-	-	-
3 NEMOPTERA						
8 Nemopteridae						
13 <i>Nemoptera sinuata</i> Olivier, 1811			-	-	-	-
4 HETEROPTERA	Yarimkanatlilar					
9 Pentatomidae						
14 <i>Aelia acuminata</i> (Linnaeus, 1758)			-	-	-	-
15 <i>Eurydema ornatum</i> (Linnaeus, 1758)			-	-	-	-
16 <i>Apodiphus amygdali</i> (Germar, 1817)			-	-	-	-

Table C5. Invertebrates Identified in the Study Area

INVERTEBRATES	COMMON NAME		IUCN	BERN		ENDEMISM
	TURKISH	ENGLISH		Anx2	Anx3	
	17	<i>Carpocoris fuscispinus</i> (Boheman, 1851)				
	18	<i>Carpocoris pudicus</i> (Poda, 1761)				
	19	<i>Graphosoma semipunctatum</i> (Fabricius, 1775)				
	20	<i>Graphosoma lineatum</i> (Linnaeus, 1758)				
	21	<i>Codophila varia</i> (Fabricius, 1787)				
	22	<i>Palomena prasina</i> (Linnaeus, 1761)				
	23	<i>Ancyrosoma leucogrammes</i> (Gmelin, 1789)				
10	Reduviidae					
	24	<i>Reduvius personatus</i> (Linnaeus, 1758)				
	25	<i>Rhynocoris punctiventris</i> (Herrich-Schaeffer, 1846)				
11	Lygaeidae					
	26	<i>Lygaeus equestris</i> (Linnaeus, 1758)				
12	Alydidae					
	27	<i>Camptopus tragacanthae</i> (Kolenati, 1845)				
5	HOMOPTERA		Catikanatlilar			
13	Cercopidae					
	28	<i>Cercopis sanguinolenta</i> (Scopoli, 1763)				
	29	<i>Cercopis vulnerata</i> Rossi, 1807				
	30	<i>Lepyromia coleoptrata</i> (Linnaeus, 1758)				
	31	<i>Philaenus spumarius</i> (Linnaeus, 1758)				
14	Delphacidae					
	32	<i>Delphax pulchellus</i> (Curtis, 1833)				
15	Aphrophoridae					
	33	<i>Neophilaenus lineatus</i> (Linnaeus, 1758)				
16	Cicadidae					
	34	<i>Tibicen plebejus</i> (Scopoli, 1763)				
17	Cicadellidae					
	35	<i>Macropsis scutellata</i> (Boheman, 1845)				
	36	<i>Thamnotettix confinis</i> (Zetterstedt, 1828)				

Table C5. Invertebrates Identified in the Study Area

INVERTEBRATES	COMMON NAME		IUCN	BERN		ENDEMISM
	TURKISH	ENGLISH		Anx2	Anx3	
	37	<i>Cicadella viridis</i> (Linnaeus, 1758)	-	-	-	-
	38	<i>Aphrodes makarovi</i> Zachvatkin, 1948	-	-	-	-
18	Issidae					
	39	<i>Mycterodus denticulatus</i> (Lindberg, 1948)	-	-	-	-
	40	<i>Issus coleopratus</i> (Fabricius, 1781)	-	-	-	-
19	Membracidae					
	41	<i>Stictocephala bisonia</i> Kopp & Yonke, 1977	-	-	-	-
6	LEPIDOPTERA					
	Kelebekler					
20	Pieridae					
	42	<i>Pieris rapae</i> (Linnaeus, 1758)	-	-	-	-
	43	<i>Pieris napi</i> Linnaeus, 1758	-	-	-	-
	44	<i>Gonepteryx rhamni</i> (Linnaeus, 1758)	-	-	-	-
	45	<i>Pontia edusa</i> (Fabricius, 1777)	-	-	-	-
	46	<i>Pieris brassicae</i> (L., 1758)	-	-	-	-
	47	<i>Aporia crataegi</i> Linnaeus 1758	-	-	-	-
	48	<i>Colias hyale</i> (Linnaeus, 1758)	-	-	-	-
	49	<i>Colias croseus</i> Geoffroy, 1785	-	-	-	-
21	Lycaenidae					
	50	<i>Lycaena phlaeas</i> (Linnaeus, 1761)	-	-	-	-
	51	<i>Polyommatus icarus</i> (Linnaeus, 1758)	-	-	-	-
	52	<i>Vacciniia optilete</i> (Knoch, 1781)	-	-	-	-
	53	<i>Aricia agestis</i> ([Denis & Schiffermüller], 1775)	-	-	-	-
	54	<i>Satyrium ilicis</i> Esper, 1779	-	-	-	-
22	Hesperiidae					
	55	<i>Thymelicus sylvestris</i> (Poda, 1761)	-	-	-	-
23	Nymphalidae					
	56	<i>Aglais urticae</i> (Linnaeus, 1758)	-	-	-	-
	57	<i>Melitaea cinxia</i> (Linnaeus, 1758)	-	-	-	-
	58	<i>Issoria lathonia</i> (Linnaeus, 1758)	-	-	-	-

Table C5. Invertebrates Identified in the Study Area

INVERTEBRATES	COMMON NAME		IUCN	BERN		ENDEMISM
	TURKISH	ENGLISH		Anx2	Anx3	
59	<i>Araschnia levena</i> Linnaeus, 1758		-	-	-	-
60	<i>Melitaea phoebe</i> Juni, 1993		-	-	-	-
24	Papilionidae					
61	<i>Papilio machaon</i> Linnaeus, 1758		-	-	-	-
62	<i>Iphiclides podalirius</i> (Linnaeus, 1758)	Scarce Swallowtail	-	-	-	-
25	Saturniidae					
63	<i>Saturnia pyri</i> ([Denis & Schiffermüller], 1775)	Great Peacock Moth	-	-	-	-
26	Sphingidae					
64	<i>Macroglossum stellatarum</i> (Linnaeus, 1758)		-	-	-	-
27	Zygaenidae					
65	<i>Zygaena filipendula</i> Linnaeus, 1758		-	-	-	-
28	Satyridae					
66	<i>Hipparchia parisatis</i> (Kollar, [1849])		-	-	-	-
7	DIPTERA	Sinekler				
29	Bibionidae					
67	<i>Bibio marci</i> (Linnaeus, 1758)		-	-	-	-
30	Empididae					
68	<i>Empis (Pachymeria) tessellata</i> Fabricius, 1794		-	-	-	-
69	<i>Empis bivittata</i> Wiedemann, 1824		-	-	-	-
70	<i>Empis femorata</i> Fabricius, 1798		-	-	-	-
31	Bombyliidae					
71	<i>Conophorus nobilis</i> (Loew, 1873)		-	-	-	-
72	<i>Conophorus virescens</i> (Fabricius, 1787)		-	-	-	-
73	<i>Hemipenthes morio</i> (Linnaeus, 1758)		-	-	-	-
74	<i>Bombylius medius</i> Linnaeus, 1758		-	-	-	-
75	<i>Bombylius ater</i> Scopoli, 1763		-	-	-	-
76	<i>Bombylius vulpinus</i> Wiedemann in Meigen, 1820		-	-	-	-
77	<i>Lomatia polyzona</i> Loew, 1869		-	-	-	-
78	<i>Villa tomentosa</i> Becker, 1916		-	-	-	-

Table C5. Invertebrates Identified in the Study Area

INVERTEBRATES	COMMON NAME		IUCN	BERN		ENDEMISM
	TURKISH	ENGLISH		Anx2	Anx3	
	79	<i>Amictus validus</i> Loew, 1862	-	-	-	-
32	Asilidae					
	80	<i>Leptogaster cylindrica</i> (De Geer, 1776)	-	-	-	-
	81	<i>Pycnopogon mixtus</i> (Loew, 1847)	-	-	-	-
	82	<i>Dysmachus praemorsus</i> (Loew, 1854)	-	-	-	-
	83	<i>Dysmachus cephalenius</i> Loew, 1871	-	-	-	-
	84	<i>Stenopogon elongatus</i> (Meigen, 1804)	-	-	-	-
	85	<i>Stenopogon junceus</i> (Wiedemann in Meigen, 1820)	-	-	-	-
33	Tabanidae					
	86	<i>Pangonius (Pangonius) fulvipes</i> (Loew, 1859)	-	-	-	-
34	Syrphidae					
	87	<i>Didea fasciata</i> Macquart, 1834	-	-	-	-
	88	<i>Episyrphus balteatus</i> (De Geer, 1776)	-	-	-	-
	89	<i>Xanthogramma pedissequum</i> (Harris, [1776])	-	-	-	-
	90	<i>Eristalis (Eristalis) tenax</i> (Linnaeus, 1758)	-	-	-	-
	91	<i>Paragus (Paragus) bicolor</i> (Fabricius, 1794)	-	-	-	-
	92	<i>Metasyrphus (M.) corollae</i> (Fabricius, 1794)	-	-	-	-
	93	<i>Metasyrphus (M.) latifasciatus</i> (Macquart, 1829)	-	-	-	-
	94	<i>Xanthogramma pedissequum</i> (Harris, [1776])	-	-	-	-
	95	<i>Myathropa florea</i> (Linnaeus, 1758)	-	-	-	-
	96	<i>Xylota segnis</i> (Linnaeus, 1758)	-	-	-	-
	97	<i>Chrysotoxum festivum</i> (Linnaeus, 1758)	-	-	-	-
	98	<i>Scaeva pyrastris</i> (Linnaeus, 1758)	-	-	-	-
	99	<i>Epistrophe grossulariae</i> (Meigen, 1882)	-	-	-	-
	100	<i>Epistrophe eligans</i> (Harris, [1780])	-	-	-	-
	101	<i>Merodon (Merodon) velox</i> Loew, 1869	-	-	-	-
	102	<i>Amenia leonina</i> (Fabricius 1775)	-	-	-	-
	103	<i>Volucella zonaria</i> (Poda, 1761)	-	-	-	-
35	Tephritidae					

Table C5. Invertebrates Identified in the Study Area

INVERTEBRATES	COMMON NAME		IUCN	BERN		ENDEMISM
	TURKISH	ENGLISH		Anx2	Anx3	
	104	<i>Urophora cardui</i> (Linnaeus, 1758)	-	-	-	-
	105	<i>Ceratitis capitata</i> Wiedemann, 1824	-	-	-	-
36	Calliphoridae					
	106	<i>Calliphora lata</i> Coquillet, 1898	-	-	-	-
37	Sarcophagidae					
	107	<i>Sarcophaga carnaria</i> (Linnaeus, 1758)	-	-	-	-
38	Muscidae					
	108	<i>Pollenia rudis</i> (Fabricius, 1786)	-	-	-	-
	109	<i>Stomoxys calcitrans</i> (Linnaeus, 1758)	-	-	-	-
8	COLEOPTERA					
	39	Carabidae	Kinkanatlılar			
	110	<i>Carabus scabrosus</i> Olivier, 1795	-	-	-	-
	111	<i>Cicindela campestris</i> Linnaeus, 1758	-	-	-	-
40	Coccinellidae					
	112	<i>Coccinella septempunctata</i> Linnaeus, 1758	-	-	-	-
	113	<i>Hippodamia (Adonia) variegata</i> (Goeze, 1777)	-	-	-	-
	114	<i>Thea 22-punctata</i> Linnaeus, 1758	-	-	-	-
41	Cetoniidae					
	115	<i>Cetonia aurata</i> (Linnaeus, 1761)	-	-	-	-
	116	<i>Potosia funebris</i> (Gory & Percheron, 1833)	-	-	-	-
	117	<i>Valgus hemipterus</i> (Linnaeus, 1758)	-	-	-	-
	118	<i>Oxythyrea cinctella</i> (Schaum, 1841)	-	-	-	-
	119	<i>Oxythyrea funesta</i> (Poda, 1761)	-	-	-	-
	120	<i>Oxythyrea albopicta</i> (Motschulsky, 1845)	-	-	-	-
	121	<i>Tropinota hirta</i> (Poda 1761)	-	-	-	-
42	Buprestidae					
	122	<i>Capnodis cariosa</i> (Palas, 1776)	-	-	-	-
	123	<i>Capnodis tenebrionis</i> (Linnaeus 1761)	-	-	-	-
	124	<i>Anthaxia fulgurans</i> (Schrank, 1789)	-	-	-	-

Table C5. Invertebrates Identified in the Study Area

INVERTEBRATES	COMMON NAME		IUCN	BERN		ENDEMISM
	TURKISH	ENGLISH		Anx2	Anx3	
125	<i>Anthaxia hungarica</i> (Scopoli, 1772)		-	-	-	-
126	<i>Anthaxia cichorii</i> (Olivier 1790)		-	-	-	-
127	<i>Meliboeus parvulus</i> Küster, 1852		-	-	-	-
128	<i>Acmaeodera flavolineata</i> Castelnau, 1835		-	-	-	-
129	<i>Coraeus rubi</i> (Linnaeus, 1767)		-	-	-	-
43	Malachidae					
130	<i>Malachius aeneus</i> (Linnaeus, 1758)		-	-	-	-
131	<i>Malachius bipustulatus</i> (Linné, 1758)		-	-	-	-
44	Tenebrionidae					
132	<i>Pachyscelis quadricollis</i> Brulle, 1832		-	-	-	-
133	<i>Blaps mucronata</i> Latreille, 1804		-	-	-	-
134	<i>Tentyria rotundata</i> (Brullé 1832)		-	-	-	-
45	Cleridae					
135	<i>Trichodes suturalis</i> Seidlitz, 1891		-	-	-	-
136	<i>Trichodes apiarius</i> (Linnaeus, 1758)		-	-	-	-
137	<i>Aphodius erraticus</i> (Linnaeus, 1758)		-	-	-	-
46	Cerambycidae					
138	<i>Pedostrangalia verticenigra</i> (Pic, 1892)		-	-	-	-
139	<i>Opsilia coerulescens</i> (Scopoli, 1763)		-	-	-	-
140	<i>Stenopterus rufus</i> (Linnaeus, 1767)		-	-	-	-
141	<i>Oxyilia duponcheli</i> (Brullé, 1832)		-	-	-	-
142	<i>Opsilia coerulescens</i> (Scopoli, 1763)		-	-	-	-
143	<i>Purpuricenus kaehleri</i> (Linnaeus, 1758)		-	-	-	-
144	<i>Purpuricenus budensis</i> (Götz, 1783)		-	-	-	-
145	<i>Paracorymbia fulva</i> Degeer, 1775		-	-	-	-
146	<i>Rutpela maculata</i> (Poda, 1761)		-	-	-	-
147	<i>Chlorophorus sartor</i> (Müller, 1766)		-	-	-	-
148	<i>Chlorophorus varius</i> (Müller, 1766)		-	-	-	-
149	<i>Stenurella bifasciata</i> (Müller, 1776)		-	-	-	-

Table C5. Invertebrates Identified in the Study Area

INVERTEBRATES	COMMON NAME		IUCN	BERN		ENDEMISM
	TURKISH	ENGLISH		Anx2	Anx3	
	150	<i>Strangalia attenuata</i> (Linnaeus, 1758)				
47		Alleculiade				
	151	<i>Omophlus rufitarsis</i> (Leske, 1785)				
48		Melyridae				
	152	<i>Enicopus hirtus</i> (Linnaeus, 1767)				
49		Meloidae				
	153	<i>Mylabris flexuosa</i> Olivier, 1811				
	154	<i>Mylabris polymorpha</i> (Pallas, 1771)				
9		HYMENOPTERA	Arilar			
50		Anthophoridae				
	155	<i>Xylocopa violacea</i> (Linnaeus, 1758)				
51		Vespidae				
	156	<i>Vespula vulgaris</i> (Linnaeus, 1758)	Esekarisi	English wasp		
	157	<i>Vespula germanica</i> (Fabricius)	Esekarisi	European wasp		
52		Ichneumonidae				
	158	<i>Netelia (Netelia) testacea</i> (Gravenhorst, 1829)				
53		Sphecidae				
	159	<i>Ammophila sabulosa</i> (Linnaeus, 1758)		Sand Wasp		
54		Apidae				
	160	<i>Bombus lucorum</i> L., 1758		White-tailed bumblebee		
55		Scoliidae				
	161	<i>Scolia flavifrons</i> Fabricius, 1775				

Table C6. The Distribution in Turkey of the Terrestrial Fauna Species of Note* Identified in the Study Area and their Economic Importance

(*IUCN, Bern and CITES-listed mammal, reptile and amphibian species. All reptiles and amphibians and virtually all birds are afforded protection with the Bern Convention.)

Species	IUCN	BERN	CITES	Distribution in Turkey	Economic Importance
<i>Erinaceus concolor</i> Martin, 1838	LR/lc			All over Turkey	None
<i>Sorex minutus</i> Linnaeus, 1766		x		Thrace, Marmara and North Anatolia	None
<i>Rhinolophus hipposideros</i> (Bechstein, 1800)	VU	x		All over Turkey	None
<i>Rhinolophus euryale</i> Blasius, 1853	VU	x		Thrace, South, South-west, North-west and North-east Anatolia	None
<i>Myotis myotis</i> (Borkhausen, 1797)	LR/nt	x		All over Turkey	None
<i>Pipistrellus pipistrellus</i> (Schreiber, 1774)	LR/lc	x		All over Turkey	None
<i>Miniopterus schreibersi</i> (Kuhl, 1819)	LR/nt	x		All over Turkey	None
<i>Lepus capensis</i> Linnaeus, 1758	LR/lc	x		All over Turkey	Game animal
<i>Sciurus anomalus</i> Chreber, 1758	LR/nt	x		Blacksea, Marmara, Thrace	Hunted for fur
<i>Dryomys nitedula</i> (Pallas, 1779)	LR/nt	x		All over Turkey	None
<i>Rattus rattus</i> (Linnaeus, 1758)	LR/lc			All over Turkey	Pest
<i>Apodemus sylvaticus</i> (Linnaeus, 1758)	LR/lc			All over Turkey	Pest
<i>Apodemus mystacinus</i> (Danford & Alston, 1877)	LR/lc			All over Turkey	Pest
<i>Mustela nivalis</i> Linnaeus, 1766	LR/lc	x		All over Turkey	None
<i>Mustela erminae</i> Linnaeus, 1758	LR/lc	x		East Anatolia and Blacksea	Hunted for fur
<i>Martes martes</i> (Linnaeus, 1758)	LR/lc	x		Marmara, Aegea, East Anatolia and Blacksea	Hunted for fur
<i>Martes foina</i> (Erxleben 1777)	LR/lc	x		North-east Anatolia and Thrace	Hunted for fur
<i>Meles meles</i> (Linnaeus, 1758)	LR/lc	x		All over Turkey	Pest
<i>Vulpes vulpes</i> Linnaeus, 1758	LR/lc			All over Turkey	Hunted for fur
<i>Canis lupus</i> Linnaeus, 1758	LR/lc	x	x	All over Turkey	Hunted for fur
<i>Canis aureus</i> Linné, 1758	LR/lc			Blacksea, Marmara, Thrace, Aegea, Mediterranean Coasts, South-east Anatolia	None
<i>Ursus arctos</i> Linnaeus, 1758	LR/lc	x	x	All over Turkey	Hunted for fur
<i>Capra aegagrus</i> Erxleben, 1777	VU	x		All along Toros Mountains, some parts of the Blacksea Mountains and East Anatolia	Hunted for food and fur
<i>Rupicapra rupicapra</i> (Linnaeus, 1758)	LR/lc	x		North-east Anatolia, Munzur Mountains, between Erzurum and Bingol provinces, Agrı and Tendurek Mountains, in the vicinity of Van province	Hunted for food and fur

Table C6. The Distribution in Turkey of the Terrestrial Fauna Species of Note* Identified in the Study Area and their Economic Importance

(*IUCN, Bern and CITES-listed mammal, reptile and amphibian species. All reptiles and amphibians and virtually all birds are afforded protection with the Bern Convention.)

Species	IUCN	BERN	CITES	Distribution in Turkey	Economic Importance
<i>Lacerta rudis</i> Bedriaga, 1886		x		Blacksea coasts and in the vicinity of Erzurum province	None
<i>Lacerta trilineata</i> Bedriaga, 1886		x		All over Turkey	None
<i>Lacerta raddei</i> Boettger, 1892		x		Trabzon, Artvin, Erzurum, Agri, Kars and Van provinces	None
<i>Ophisops elegans</i> Menetries, 1832		x		All over Turkey	None
<i>Eirenis modestus</i> Martin, 1838		x		All over Turkey	None
<i>Natrix tessellata</i> (Laurenti, 1768)		x		All over Turkey	None
<i>Coluber schmidtii</i> Nikolsky 1909		x		Especially in the eastern part of Anatolia	None
<i>Vipera lebetina</i> (Linnaeus, 1758)		x		In the vicinity of Adana province, South East and East Anatolia	Its poision may be of use
<i>Rana ridibunda</i> Pallas, 1771		x		All over Turkey	None
<i>Bufo viridis</i> Laurenti, 1768		x		All over Turkey	None